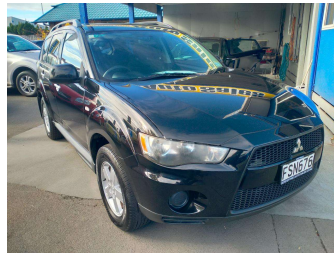


2010 Mitsubishi Outlander 2.4P LS



Purchase Price **\$11,990**
Includes GST, Registration & Licensing

Indicative repayments
\$67.69 per week*
See finance details below.

Gain peace of mind with Mechanical Breakdown Insurance. **Ask us how.**

Top features

- » 4WD
- » ABS Brakes
- » AUX
- » Climate Control
- » Cruise Control
- » Electric windows
- » Face Lift Model
- » Factory Alloys
- » Keyless Start
- » New Zealand New
- » Parking Sensors
- » Roof Rails
- » Side Airbags
- » Smart Key Entry
- » Tinted Windows
- » Tiptronic
- » Towbar
- » Traction Control

Body Style
5 door, RV/SUV

Odometer
102,400 km

Engine
2359 cc, Internal Combustion

Fuel Type
Petrol


Transmission
CVT, 4WD

Wheels
-

VIN
JMFXTCW5WBU002707

Interior
-

Safety



Based on 2023 UCSR rating for 06-12 models

Reg No.
FSN676

Ext Colour
Black

History
NZ New, 6 owners

Seats
5 seats

CO2 Emissions
★ ★ ☆ ☆ ☆ ☆
248 grams/km

Energy Economy
★ ☆ ☆ ☆ ☆ ☆
Annual fuel cost of \$4,080
10.4L per 100km

Cost per year is an estimate based on petrol price of \$2.80 per litre and an average distance of 14000 km. Emissions and Energy Economy figures standardised to 3P WLTP.

Stock ID: 5442



Beresford Auto Sales 2018 Ltd | Phone 06 870 8011 | Email sales@beresfordautosales.co.nz
720 Heretaunga Street West, Saint Leonards, Hastings 4120, New Zealand
www.beresfordautosales.co.nz

*Finance Calculation based on a 60 month term, no deposit and with an example annual fixed interest rate of 14.95%. Actual interest rate may be higher or lower. Includes establishment fee of \$386 and PPSR Fee of \$7.39. Full term amount payable \$17,599.98. Estimate only, not an offer to finance. Terms, conditions and lending criteria apply.