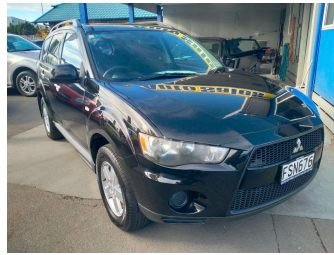


2010 Mitsubishi Outlander 2.4P LS



Purchase Price **\$14,990**
Includes GST, Registration & Licensing

No Deposit Finance Available To Approved Customers

Gain peace of mind with Mechanical Breakdown Insurance. **Ask us how.**



- Top features**
- » 4WD
 - » ABS Brakes
 - » AUX
 - » Climate Control
 - » Cruise Control
 - » Electric windows
 - » Face Lift Model
 - » Factory Alloys
 - » Keyless Start
 - » New Zealand New
 - » Parking Sensors
 - » Roof Rails
 - » Side Airbags
 - » Smart Key Entry
 - » Tinted Windows
 - » Tiptronic
 - » Towbar
 - » Traction Control

Body Style
5 door, RV/SUV

Odometer
102,400 km

Engine
2359 cc, Internal Combustion

Fuel Type
Petrol

Transmission
CVT, 4WD

Wheels
-

VIN
JMFXTCW5WBU002707

Interior
-

Safety



Based on 2023 UCSR rating for 06-12 models

Reg No.
FSN676

Ext Colour
Black

History
NZ New, 6 owners

Seats
5 seats

CO2 Emissions
★ ★ ☆ ☆ ☆ ☆
248 grams/km

Energy Economy
★ ☆ ☆ ☆ ☆ ☆

Annual fuel cost of \$4,080
10.4L per 100km

Cost per year is an estimate based on petrol price of \$2.80 per litre and an average distance of 14000 km. Emissions and Energy Economy figures standardised to 3P WLTP.

Stock ID: 5442



Beresford Auto Sales 2018 Ltd | Phone 06 870 8011 | Email sales@beresfordautosales.co.nz
720 Heretaunga Street West, Saint Leonards, Hastings 4120, New Zealand
www.beresfordautosales.co.nz