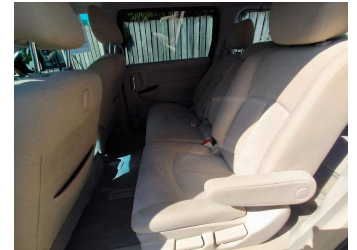
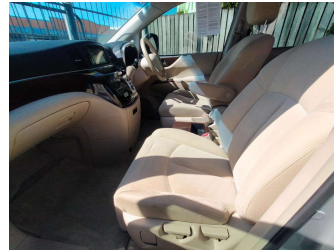


# 2012 Nissan Elgrand



Purchase Price **\$16,990**  
Includes GST, Registration & Licensing

Indicative repayments  
**\$95.02 per week\***  
See finance details below.

Gain peace of mind with Mechanical Breakdown Insurance. **Ask us how.**

**Top features**

- » 8 SEATER
- » ABS Brakes
- » Auto Headlights
- » Bluetooth
- » Climate Control
- » Cloth Trim
- » Electric Sliding Door(...)
- » Electric Tailgate
- » Factory Alloys
- » Fog Lights
- » Keyless Start
- » Parking Sensors
- » Reversing Camera
- » Smart Key Entry
- » Tinted Windows
- » Tiptronic

Body Style  
**People Movers**

Odometer  
**89,370 km**

Engine  
**2488 cc, Internal Combustion**


Fuel Type  
**Petrol**

Transmission  
**Auto, 2WD**

Wheels  
-

VIN  
**7AT0DH6MX19032405**

Interior  
-

Safety  
  
Based on 2024 VSRR rating

Reg No.  
**QEN373**

Ext Colour  
**Silver**

History  
**Ex-Overseas**

Seats  
**8 seats**

CO2 Emissions  
**★ ★ ★ ☆ ☆ ☆**  
**232 grams/km**

Energy Economy  
**★ ☆ ☆ ☆ ☆ ☆**  
**Annual fuel cost of \$3,800**  
**9.7L per 100km**

Cost per year is an estimate based on petrol price of \$2.80 per litre and an average distance of 14000 km. Emissions and Energy Economy figures standardised to 3P WLTP.

**Stock ID: 5465**



Beresford Auto Sales 2018 Ltd | Phone 06 870 8011 | Email sales@beresfordautosales.co.nz  
720 Heretaunga Street West, Saint Leonards, Hastings 4120, New Zealand  
www.beresfordautosales.co.nz

\*Finance Calculation based on a 60 month term, no deposit and with an example annual fixed interest rate of 14.95%. Actual interest rate may be higher or lower. Includes establishment fee of \$386 and PPSR Fee of \$7.39. Full term amount payable \$24,706.26. Estimate only, not an offer to finance. Terms, conditions and lending criteria apply.