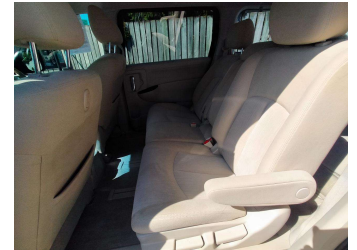
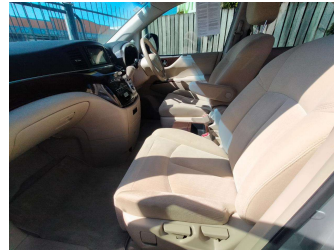


2012 Nissan Elgrand



Purchase Price **\$16,990**
Includes GST, Registration & Licensing

Indicative repayments
\$95.02 per week*
See finance details below.

Gain peace of mind with Mechanical Breakdown Insurance. **Ask us how.**

Top features

- » 8 SEATER
- » ABS Brakes
- » Auto Headlights
- » Bluetooth
- » Climate Control
- » Cloth Trim
- » Electric Sliding Door(...)
- » Electric Tailgate
- » Factory Alloys
- » Fog Lights
- » Keyless Start
- » Parking Sensors
- » Reversing Camera
- » Smart Key Entry
- » Tinted Windows
- » Tiptronic

Body Style
People Movers

Odometer
89,370 km

Engine
2488 cc, Internal Combustion


Fuel Type
Petrol

Transmission
Auto, 2WD

Wheels
-

VIN
7AT0DH6MX19032405

Interior
-

Safety

Based on 2023 VSRR rating

Reg No.
QEN373

Ext Colour
Silver

History
Ex-Overseas

Seats
8 seats

CO2 Emissions
★ ★ ★ ☆ ☆ ☆
232 grams/km

Energy Economy
★ ☆ ☆ ☆ ☆ ☆
Annual fuel cost of \$3,800
9.7L per 100km

Cost per year is an estimate based on petrol price of \$2.80 per litre and an average distance of 14000 km. Emissions and Energy Economy figures standardised to 3P WLTP.

Stock ID: 5465



Beresford Auto Sales 2018 Ltd | Phone 06 870 8011 | Email sales@beresfordautosales.co.nz
720 Heretaunga Street West, Saint Leonards, Hastings 4120, New Zealand
www.beresfordautosales.co.nz

*Finance Calculation based on a 60 month term, no deposit and with an example annual fixed interest rate of 14.95%. Actual interest rate may be higher or lower. Includes establishment fee of \$386 and PPSR Fee of \$7.39. Full term amount payable \$24,706.26. Estimate only, not an offer to finance. Terms, conditions and lending criteria apply.